



ODYSSEY

The monthly newsletter from the Space Science
Environmental & Engineering Foundation.

A LOOK AT THE ENVIRONMENTAL DESIGN CHALLENGE 2022 WORKSHOP

The first Environmental Design Challenge workshop was successfully held earlier this month. As part of our new EDC programme, the SSEF aims to bridge space with environmental action, building on the success of past Space Design Challenges and outreach programmes.

[Read More](#)

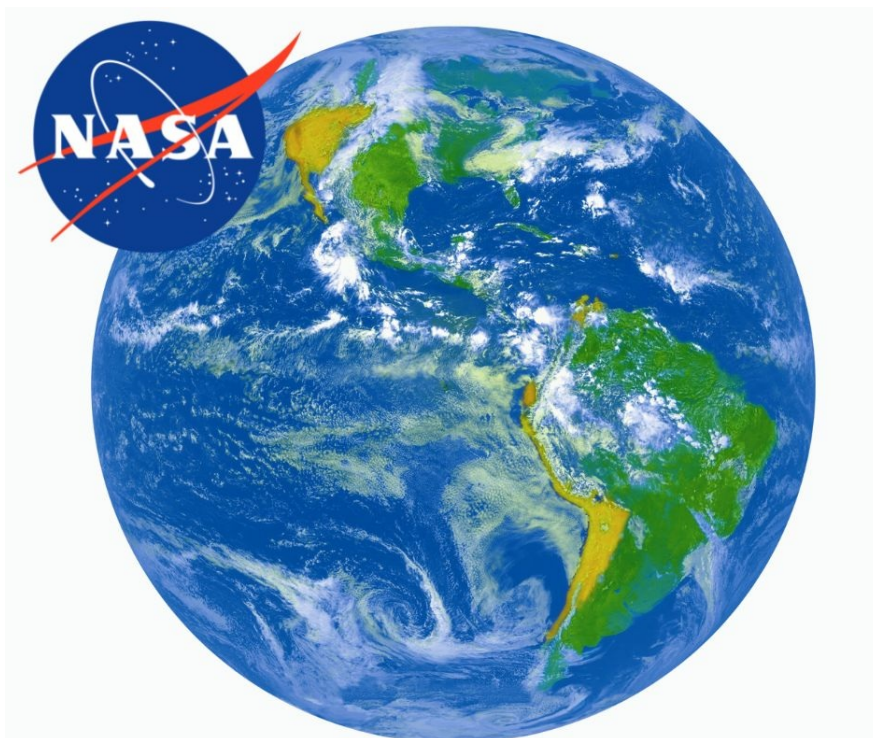


WINNER OF THE SPACE DESIGN COMPETITION



Lift off for Eltham College as OE, Hasir wins prestigious space design competition. [Read More](#)

NASA EARTH INFORMATION CENTER



For more than 50 years, NASA satellites have provided open-source and publicly available data on Earth's land, water, temperature, weather, and climate.

To improve access to this key information, NASA Administrator Bill Nelson announced a concept for the Earth Information Center in October 2021, and released the first concept in September 2022, which will allow users to see how our planet is changing and provide

easy-to-use information and resources that support decision makers in developing the tools they need to mitigate, adapt and respond to climate change.

[Read More & Watch Here](#)

NEWS

We look at the latest space news from around the world.



Hear Meteoroid Striking Mars. [Listen Here](#)



Artemis 1 update
[Read More](#)



Diomorphos: NASA files spacecraft into asteroid in direct hit.
[Read More](#)

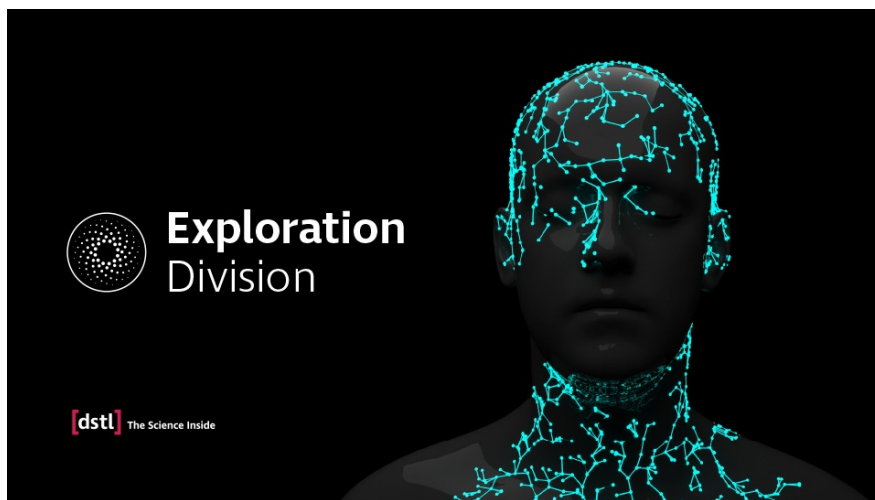
FEATURE

What is Space Weather and its impacts?

Space Weather describes changing environmental conditions in near - Earth space. [Read More](#)



**INTERVIEW WITH LINDA KNUTSEN - HEAD,
EXPLORATION DIVISION UK GOVERNMENT**




Featured in the Top 50 Tec Women in Europe and appointed Head of the Exploration Division for the UK Government in April 2021, Linda tells us about her career journey and some of the work the division does. [Read More](#)

MARS FACTS

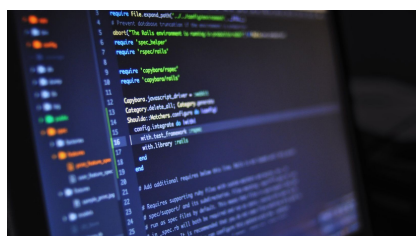
MARS

FAST FACTS



- Fourth planet from the sun.
- Second smallest planet in the Solar System and is half the size of Earth.
- Has two moons.
- Red in color due to its iron minerals.
- Atmosphere: mostly carbon dioxide, some water vapour.

CAREERS IN SPACE



Software Engineer - Alan O'Brien

Alan talks about the software he designs for the James Webb Space Telescope [Watch Here](#)

#SPACE ON SOCIAL

A Day in the life of an astronaut...

Chris Hadfield' shows us his Space Kitchen and what and how astronauts eat . [Watch Here](#)



If your interested in learning more about space then there is so much information out there on social media. Below is a selection of some of our favourites!



@Astro Samantha
Teamwork makes the Dream work !
[See Here](#)



@ISS_Research
Microgravity offers a unique opportunity for cancer research. [Watch Here](#)



@TheRealBuzz

Dr. Buzz Aldrin remembers Her Majesty Queen Elizabeth II. [Read Here](#)

GOOD NEWS STORIES

Do you or your school have a good news story about taking part in one of our events?

If you do, we'd love to hear from you so we can feature it in one of our newsletters.

Get in touch with any good news stories!

[Here's How](#)

GET INVOLVED

If your school would like more information on any of SSEF's programmes, please contact Nichola Dale - n.dale@ssef.org.uk

Other ways to get involved with the SSEF

[Donate](#)

[Become a Sponsor](#)

[Volunteer](#)

THANKS TO OUR SPONSORS

Our Sponsors

Students will never forget the people they meet, the friends they make, or the supporters who help them. Backing the SSEF is not a one-way street. Sponsorship is as advantageous for you and your future as for the young designers and explorers of tomorrow.



Thanks for reading. If you value our non-profit, non-partisan newsroom, please consider a [donation to SSEF](#).

Space Science Environmental & Engineering Foundation

28 Old Brompton Road, South Kensington, London, SW7 3SS, LONDON

This email was sent to {{contact.EMAIL}}
You've received it because you've subscribed to our newsletter.

[Unsubscribe](#)

Sent by
 sendinblue